



# SECURE-TECH

DETENTION ELECTRONIC SYSTEMS  
ETECH CONTROLS CORPORATION - MANUFACTURER  
4051 ALVIS COURT #3, ROCKLIN, CALIFORNIA, USA 95677  
TEL (916) 630-1300 • FAX (916) 630-1100 • FREE (800) 800-2523

MODEL  
HC-0819

## 8 DOOR CONTROL / MONITOR

### FEATURES:

- 8 OPTO-ISOLATED (7500V) INPUTS
- LAMP TEST INPUT
- ENABLE / DISABLE INPUT
- GROUP RELEASE INPUT
- 8 RED LED STATUS OUTPUTS
- 8 GREEN LED STATUS OUTPUTS
- ANY DOOR OPEN LED STATUS OUTPUT
- 8 FORM C FUSED 10 AMP RELAY OUTPUTS
- ALL PLUG CONNECTION
- 3.25" SNAP TRACK MOUNT
- 2 YEAR WARRANTY

### FUNCTIONAL DESCRIPTION:

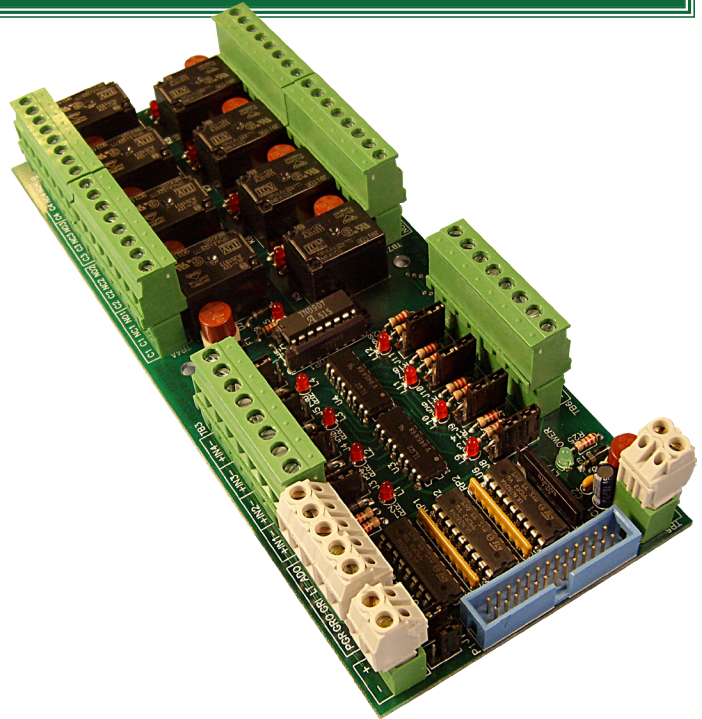
The HC-0819 controls and monitors eight swing doors with solenoid operated locks.

### INPUTS / OUTPUTS:

Eight opto-isolated door status inputs are configured with pin jumpers to monitor from 5 to 24 VDC positive or negative voltage circuits or dry contact closures. Outputs are provided to switch control panel red and green LEDs for each door status input and a group indication Any Door Open LED. Eight green LEDs monitor the status of the inputs. A Group Release input is provided to activate all of the relay outputs simultaneously. A Power Grant input is provided to remotely enable / disable the door control outputs.

Eight form C relay outputs are provided to control door locks. Each relay output circuit is fuse protected. The replaceable fuses are available in various amp sizes to match the controlled circuit load. The 10 amp size is standard. Each relay's energized status is indicated by a red LED. The relay contacts are rated as follows:

FORM CUL class B	CSA	
277 VAC	6 AMP	6 AMP
250 VAC	10 AMP	10 AMP
30 VDC	5 AMP	5 AMP



Field wiring connects to Phoenix type compression screw terminal plugs sized for 22 to 12 AWG stranded conductors. Control panel wiring is connected via a 26-pin male header. The mating female ribbon plug is provided.

### SIZE:

3.25" W x 8.00" L x 1.25" D  
82.6mm W x 203.2mm L x 31.8mm D

### POWER:

12 - 14 VDC, 580ma, 2 amp plug-in fuse, green LED indicated

### OPTIONS:

1. Other plug-in fuse amp sizes to better protect the controlled circuit load.

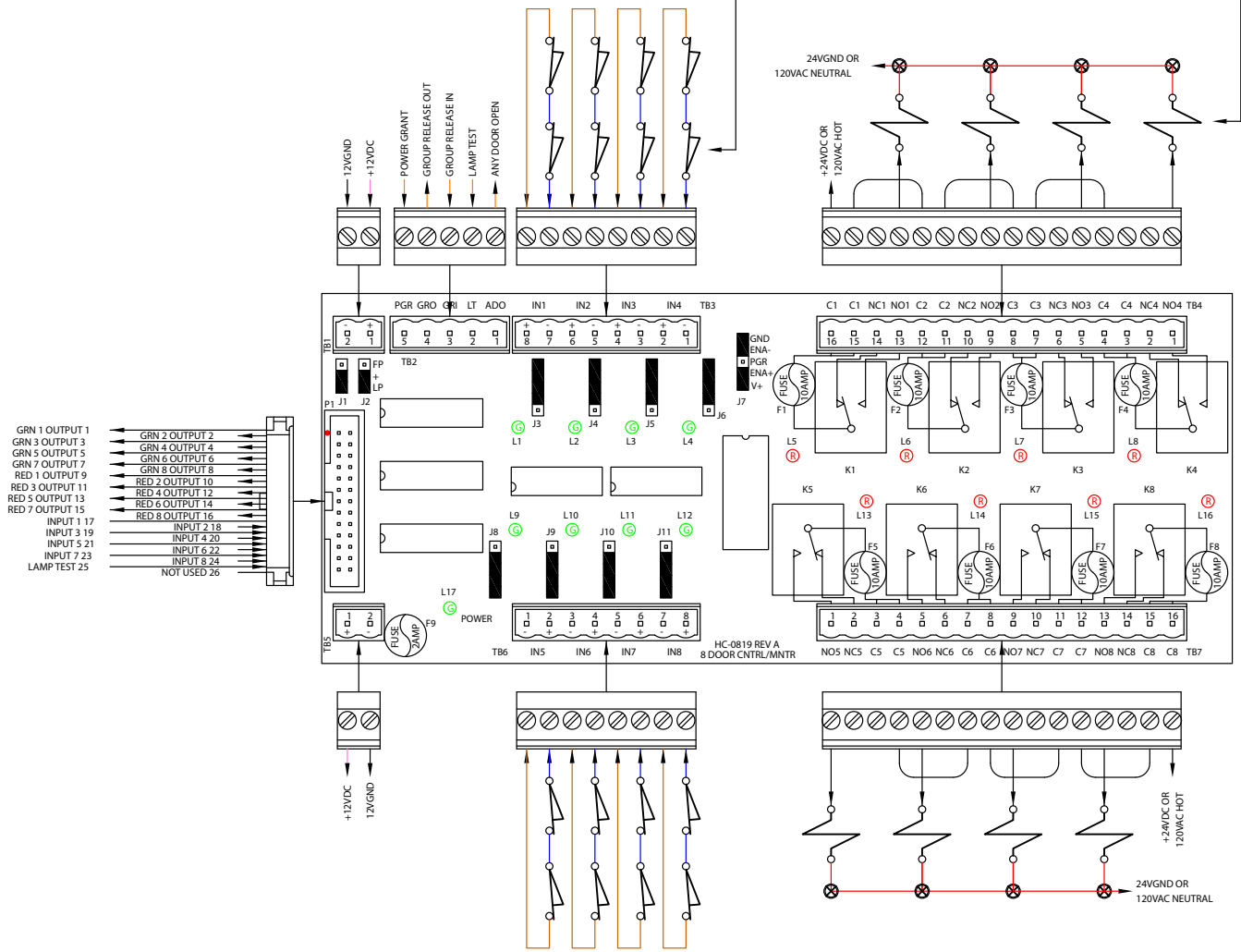
**\*Please note: Do not exceed a cumulative total of 10 amps when using relay common terminals for bussing.**

*ST The Sign of Excellence*

# MODEL HC-0819 8 DOOR CONTROL / MONITOR HOOK-UP DIAGRAM

DOOR POSITION AND LOCK STATUS SWITCHES (SECURE)

DOOR LOCK SOLENOIDS



- GRN 1 OUTPUT 1
- GRN 3 OUTPUT 3
- GRN 5 OUTPUT 5
- GRN 7 OUTPUT 7
- RED 1 OUTPUT 9
- RED 3 OUTPUT 11
- RED 5 OUTPUT 13
- RED 7 OUTPUT 15
- INPUT 1 17
- INPUT 3 19
- INPUT 5 21
- INPUT 7 23
- LAMP TEST 25
- GRN 2 OUTPUT 2
- GRN 4 OUTPUT 4
- GRN 6 OUTPUT 6
- GRN 8 OUTPUT 8
- RED 2 OUTPUT 10
- RED 4 OUTPUT 12
- RED 6 OUTPUT 14
- RED 8 OUTPUT 16
- INPUT 2 18
- INPUT 4 20
- INPUT 6 22
- INPUT 8 24
- NOT USED 26

**FIELD POWER**

**FIELD POWER ON TB5 (STD)**

**FIELD POWER ON TB1**

**MONITORING**

**2 POINT CONTACT (STD)**

**EXTERNAL VOLTAGE**

**1 POINT CONTACT (GND)**

**TEST**

**POWER GRANT**

**POWER GRANTED**

**POWER GRANTED IF TB2-5 IS GND**

**POWER GRANTED IF TB2-5 IS +12VDC**

**\*Please note: Do not exceed a cumulative total of 10 amps when using relay common terminals for bussing.**